



THE NED

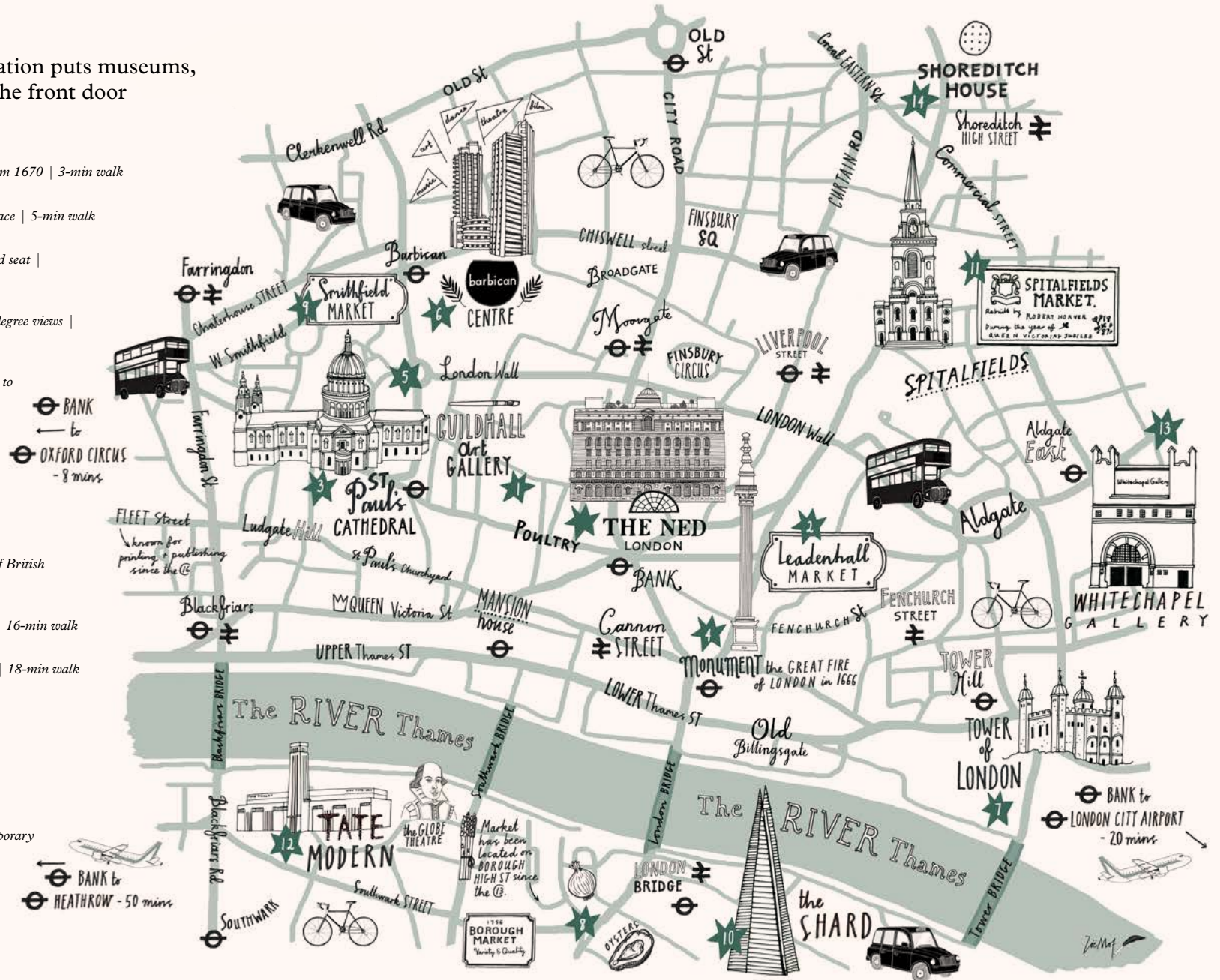
CITY OF LONDON





The Ned London's central City location puts museums, markets and galleries a stroll from the front door

- 1 **Guildhall Art Gallery**
Home to the City of London's art collection, dating from 1670 | 3-min walk
- 2 **Leadenhall Market**
Ornate Victorian food market now a thriving retail space | 5-min walk
- 3 **St Paul's Cathedral**
The Bishop of London's Sir Christopher Wren-designed seat | 7-min walk
- 4 **The Monument**
Commemorating the Great Fire of London with 360-degree views | 8-min walk
- 5 **Museum of London**
A potted London history spanning the Roman Empire to present day | 12-min walk
- 6 **Barbican Centre**
Europe's largest performing arts centre for concerts, theatre and film | 13-min walk
- 7 **Tower of London**
A castle with a bloody past, now home to the Crown Jewels | 13-min walk
- 8 **Borough Market**
London's oldest indoor food market peddling the best of British produce | 14-min walk
- 9 **Smithfield Market**
An 800-year-old wholesale meat and poultry market | 16-min walk
- 10 **The Shard**
See London and environs from the UK's tallest tower | 18-min walk
- 11 **Old Spitalfields Market**
Shops, events and food, open seven days a week | 19-min walk
- 12 **Tate Modern**
Seven storeys of international modern art | 19-min walk
- 13 **Whitechapel Gallery**
Offbeat space showing work from modern and contemporary masters | 21-min walk
- 14 **Shoreditch House**
A private members' club with bedrooms in a former warehouse | 23-min walk





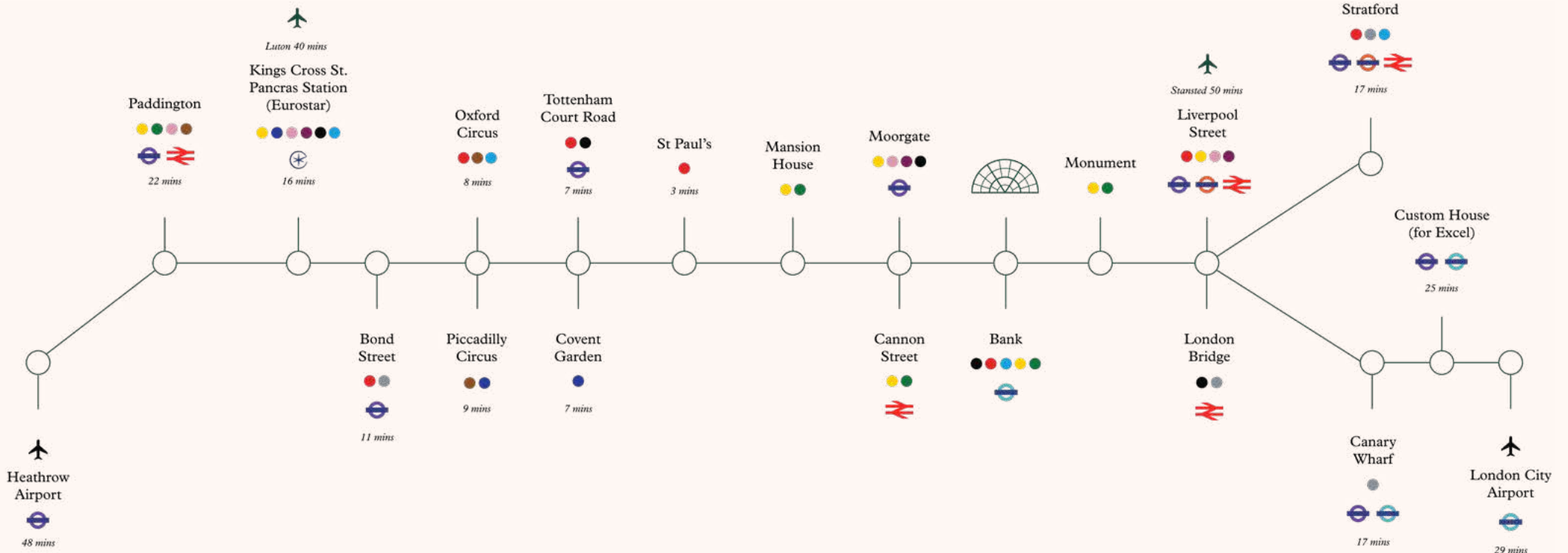

THE NED
CITY OF LONDON



The Ned London is conveniently situated directly next to Bank Station, which combined with the adjoining Monument Station transports more than 120 million passengers per year through its London Underground connections to the Central, Northern, Waterloo & City, District and Circle lines as well as the Docklands Light Railway. Other nearby connections are also available

at Cannon Street, Mansion House, St. Paul's, Fenchurch Street, as well as Moorgate and Liverpool Street.

Transportation links nearby The Ned London provide easy access across Central and Greater London, including international airports such as Heathrow, Gatwick and London City Airport.



Key

Bakerloo		Jubilee		Elizabeth Line	
Central		Metropolitan		DLR	
Circle		Northern		Overground	
District		Picadilly		National Rail	
Hammersmith & City		Waterloo			

Walking Times

Bank	1 min	Monument	8 mins
Mansion House	5 mins	St. Paul's	8 mins
Cannon Street	5 mins	London Bridge	10 mins
Moorgate	5 mins	Liverpool Street	10 mins







Millie's Lounge - British



Cecconi's - Italian



Lutyens Grill - Grill



Malibu Kitchen - Californian





Nickel Bar - American



Kaia - Pan-Asian



Electric Bar & Diner - American



Library Bar - Cocktails





The Parlour - Jazz & Cabaret



Long Bar



The Snug



The Kennels





NICKEL STAGE

*Monday - Friday, 7am - late
Saturday - Sunday, 9am - late*

Experience daily live performances from house bands, jazz trios, and London's up-and-coming talent. Stage performances are from Monday to Friday, 5 pm to 11:45 pm, and Saturday to Sunday, 12 pm to 11:15 pm.

THE PARLOUR

*Wednesday and Thursday, 6pm - 11.30pm
Friday and Saturday, 6pm - 12.30am*

Enjoy dinner and cocktails while live Jazz and Cabaret performances set the soundtrack for your evening from 7pm to 11pm.

THE VAULT

Tuesday to Saturday, 5pm - late

Exclusively for Ned's Club Members, this late-night bar with house DJ's on Friday and Saturdays is located within the original bank vault. Access is available for all Parlour bookings and guests staying during the summer months, subject to availability.



BEDROOMS & SUITES





The Ned’s 250 bedrooms, nine of which are situated next to the event spaces, can be booked as part of an event. Rooms range in size from intimate to large-scale suites – all with a nod to 1920s glamour. Every bedroom at The Ned has been designed to give guests a relaxed yet memorable stay.

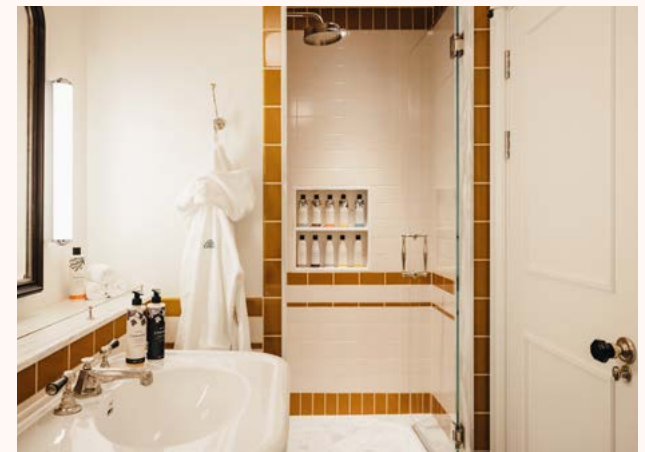
<i>Group accomodation pricing</i>	<i>Rates from (inc tax)</i>	<i>Rates from (excl tax)</i>
LOW SEASON	£380.00	£316.67
HIGH SEASON	£430.00	£358.33
WEEKENDS	£320.00	£266.67
SCHOOL HOLIDAYS	£270.00	£225.00

<i>Bedroom size</i>	<i>Room count</i>	<i>Bed size</i>	<i>Room size</i>
ACCESSIBLE	8	Queen / King	25-35 sq m / 270-375 sq ft
COSY	81	Queen	20-30 sq m / 215-320 sq ft
MEDIUM	105	King	25-35 sq m / 270-375 sq ft
LARGE	11	King / Super King	35-45 sq m / 375-485 sq ft
HERITAGE	10	King / Super King	30-45 sq m / 320-485 sq ft
GRAND HERITAGE	5	King / Super King	40-65 sq m / 430-700 sq ft
STAIRWELL STUDIO	6	King / Super King	50-60 sq m / 538-645 sq ft
STUDIO SUITE	5	King / Super King	40-45 sq m / 430-485 sq ft
HERITAGE SUITE	1	Super King	50 sq m / 540 sq ft
TERRACE SUITE	1	Super King	50 sq m / 540 sq ft
DUPLEX SUITE	1	Super King	85 sq m / 915 sq ft
2 BED FAMILY SUITE	1	Super King	95 sq m / 1025 sq ft
LUTYENS SUITE	1	Super King	100 sq m / 1075 sq ft





25 - 35 sq m | 270 - 375 sq ft | 106 bedrooms

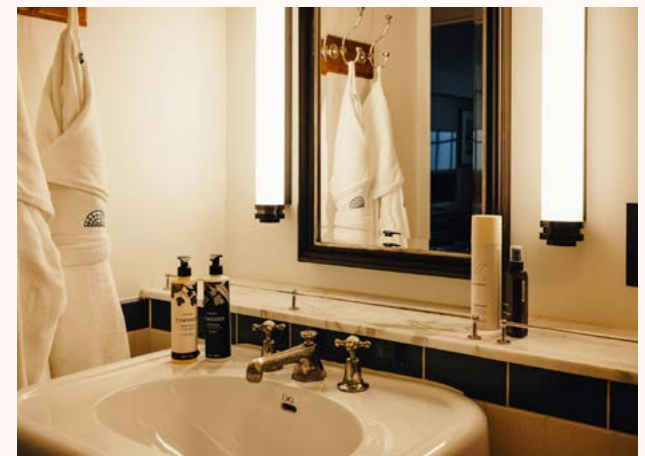


35 - 45 sq m | 375 - 485 sq ft | 11 bedrooms



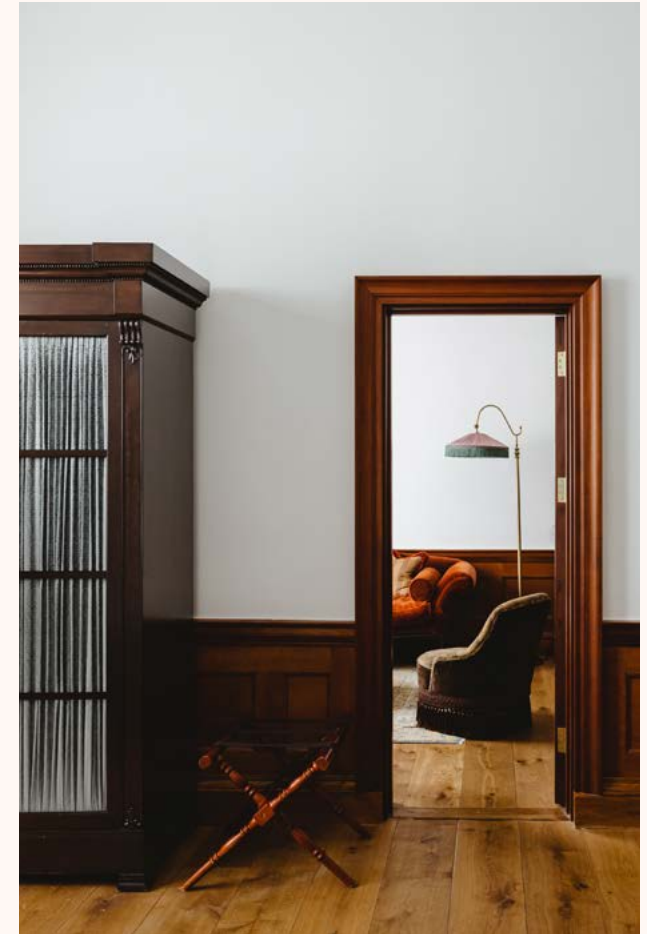






40 - 45 sq m | 430 - 585 sq ft | 5 suites





50 sq m | 540 sq ft | 1 suite



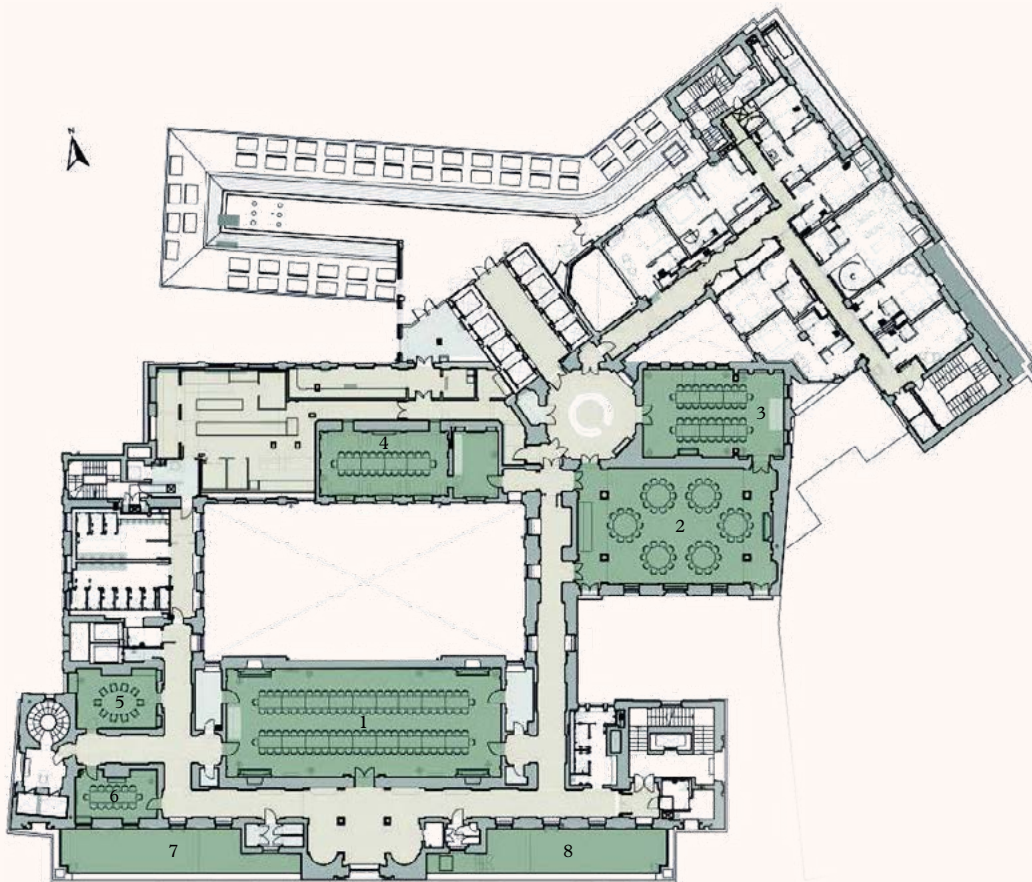






PRIVATE PARTIES & EVENTS

- | | | | |
|---|--|---|--|
| 1 | The Tapestry Room
<i>Capacity of up to 200</i> | 6 | The Rose Room
<i>Capacity of up to 14</i> |
| 2 | The Saloon
<i>Capacity of up to 120</i> | 7 | South - West Terrace
<i>Capacity of up to 70</i> |
| 3 | The Drawing Room
<i>Capacity of up to 60</i> | 8 | South - East Terrace
<i>Capacity of up to 70</i> |
| 4 | The RWB Room
<i>Capacity of up to 60</i> | 9 | Princes Dome
<i>Capacity of up to 50</i> |
| 5 | The Wren Room
<i>Capacity of up to 10</i> | | |



MEETINGS & EVENTS SPACES

Between steel and glass towers and 17th-century spires, The Ned offers access to six Grade I-listed rooms, two terraces and Princes Dome. The historic building, designed by Sir Edwin 'Ned' Lutyens almost a century ago, has been carefully restored by the design teams from Soho House & Co and Sydell Group. The rooms retain many original period features, including walnut panelling and vintage chandeliers, as well as ample arched windows to allow for plenty of natural light.

The private hire spaces range in size from 21 sq m to 165 sq m and have a capacity of between four and 200 people. Food and drink menus – ranging from cocktails and canapés to four-course dinners – can be created by our team.





Meeting Room Setups

Setup	Hollow Sq	U Shape	Cabaret	Classroom	Theatre
Capacity	68	58	77	80	200

Banquet Setups

Setup	Round Table	Long Table	Reception
Capacity	120	140	200



THE TAPESTRY ROOM

165 sq m | L: 20.9 m | W: 7.9 m | H: 8.7 m
 1775 sq ft | L: 68.6 ft | W: 25.9 ft | H: 28.6 ft

Featuring original walnut panelling and crystal chandeliers, The Tapestry Room is our most iconic space. It takes its name from the remarkable pastoral tapestry that wraps around the upper walls - the largest of its kind ever produced in England when it was created in the 1920s.





Meeting Room Setups

Setup	Hollow Sq	U Shape	Cabaret	Classroom	Theatre
Capacity	50	38	63	58	120

Banquet Setups

Setup	Round Table	Long Table	Reception
Capacity	70	68	120



THE SALOON

125 sq m | L: 14.7 m | W: 8.5 m | H: 9 m
 1345 sq ft | L: 48.2 ft | W: 27.9 ft | H: 29.5 ft

*Dominated by an 18th-century chandelier from London's Devonshire House,
 The Saloon glories in ornate chalk frieze and a restored parquet floor.*





Meeting Room Setups

Setup	Boardroom	Hollow Sq	U Shape	Cabaret	Classroom	Theatre
Capacity	26	38	24	28	28	76

Banquet Setups

Setup	Round Table	Long Table	Reception
Capacity	50	48	80



THE DRAWING ROOM

70 sq m | L: 10.6 m | W: 6.6 m | H: 3.2 m
 755 sq ft | L: 34.8 ft | W: 21.7 ft | H: 10.5 ft

Connected to The Saloon, The Drawing Room has a club-like feel, with its restored panelled walls lined with period etchings, paintings and lithographs.





Meeting Room Setups

Setup	Boardroom	Hollow Sq	U Shape	Cabaret	Classroom	Theatre
Capacity	26	16	18	21	28	60

Banquet Setups

Setup	Round Table	Long Table	Reception
Capacity	30	28	50



THE RWB ROOM

45 sq m | L: 9.7 m | W: 4.6 m | H: 3.3 m
 480 sq ft | L: 31.8 ft | W: 15.1 ft | H: 10.8 ft

Originally the private luncheon room of the Midland Bank's chairman, Reginald McKenna, The RWB Room is distinguished by its unique light oak panelling, giving it an intimate, informal atmosphere.





THE WREN ROOM

26 sq m | L: 5.9 m | W: 4.4 m | H: 2.9 m
 279 sq ft | L: 19 ft | W: 14.4 ft | H: 9.5 ft

Capacity of 10

Named after Sir Christopher Wren, who designed St Mildred's Church, a previous occupant of the 27 Poultry site, this room has original chandeliers, wood panelling and a carpet inspired by large-leaf Verdure tapestries.



THE ROSE ROOM

21 sq m | L: 5.9 m | W: 3.6 m | H: 2.7 m
 229 sq ft | L: 19.4 ft | W: 11.8 ft | H: 8.9 ft

Capacity of 14

Named after the Rose Tavern, which stood on The Ned's site before being consumed by the Great Fire of London, The Rose Room features original chandeliers, a marble fireplace and wood panelling.





THE TERRACES

60 sq m / 645 sq ft

Capacity for 26 dining or 70 standing, on each terrace

Looking out over the City of London and St Paul's Cathedral, our two large terraces have a secluded feel, offering privacy with a dramatic view. Both are ideal for pre-dinner drinks in conjunction with our larger event spaces, or for a stand-alone party. For those seeking to eat al fresco, the terraces can accommodate up to 26 people each, for lunches and dinners catered for by our bespoke events kitchen.





PRINCES DOME

56 sq m / 600 sq ft

Princes Dome is one of two converted domes on the roof, with an outdoor terrace for eating and drinking.

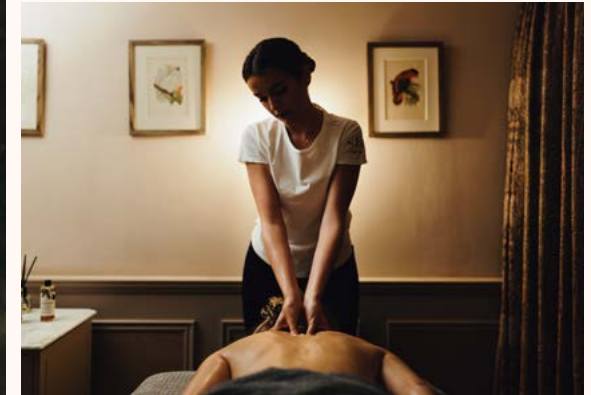
The dome has a fully stocked bar and walls are clad with duck egg blue wood.

Banquet Setups

<i>Setup</i>	<i>Dinner</i>	<i>Reception</i>
<i>Capacity</i>	20	50



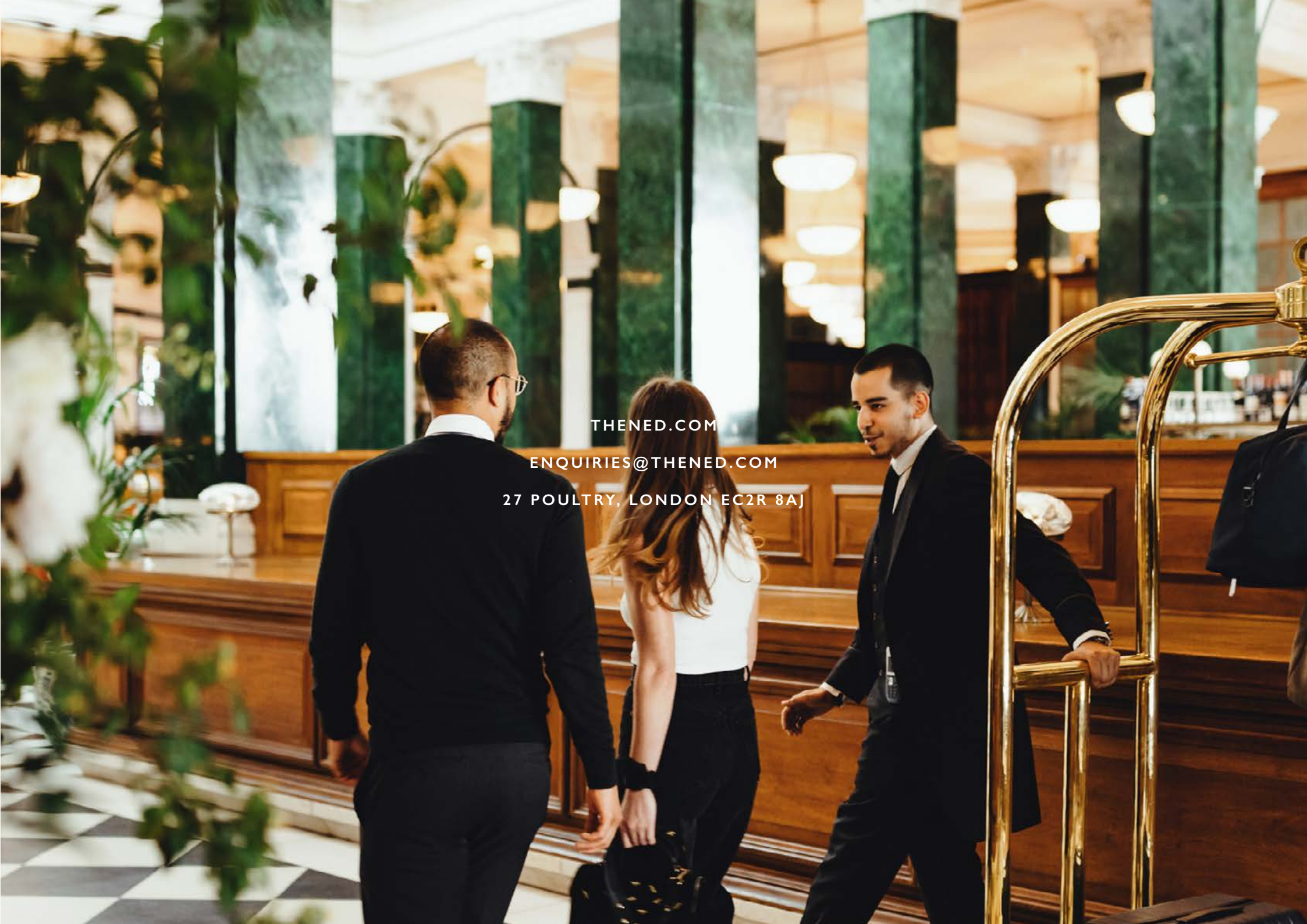
NED'S CLUB











THENED.COM

ENQUIRIES@THENED.COM

27 POULTRY, LONDON EC2R 8AJ