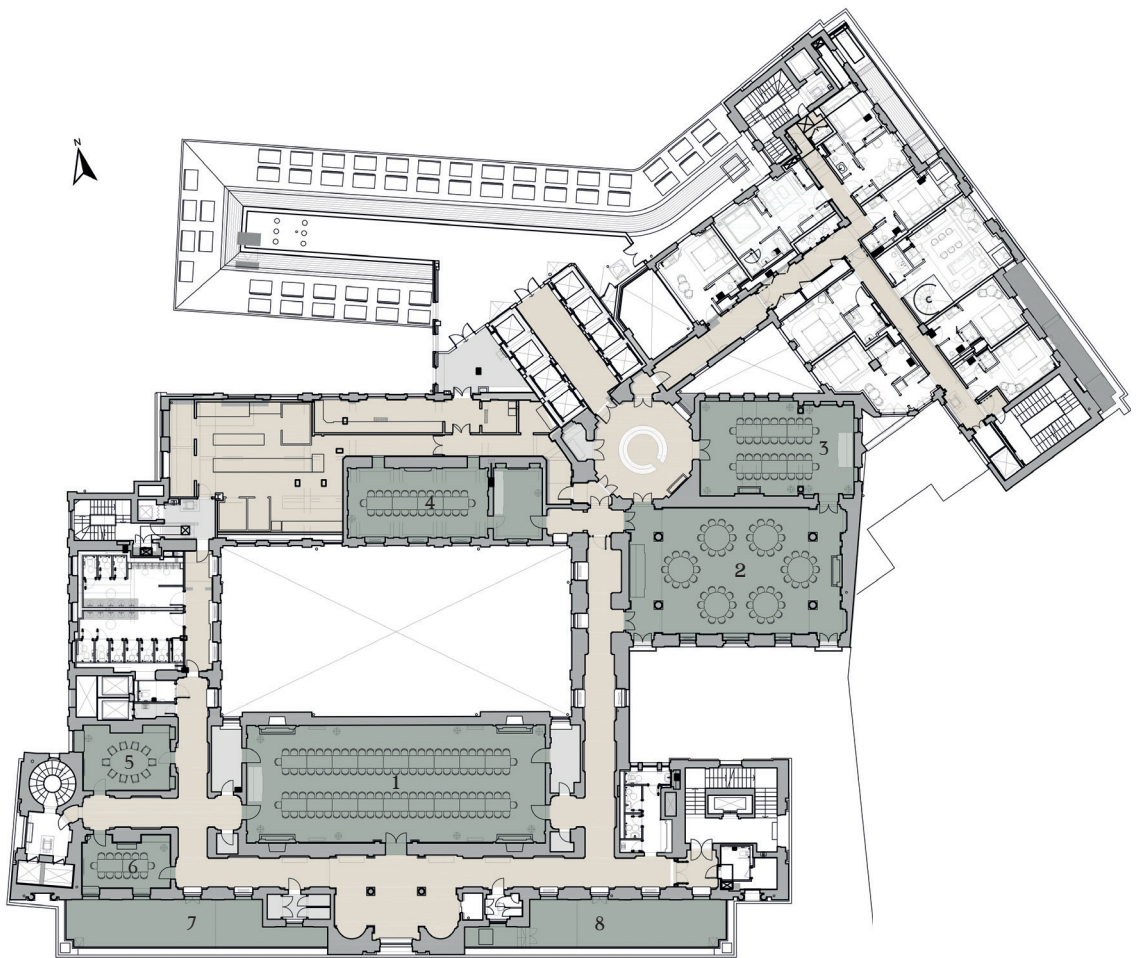


# Meeting & Event Spaces

The Ned's six private hire rooms and two terraces are among the building's most elegant spaces – all benefit from natural light and have a dedicated reception area

- |   |   |   |                                       |
|---|---|---|---------------------------------------|
| 1 | <b>THE TAPESTRY ROOM</b> (capacity of 42-200) | 5 | <b>THE WREN ROOM</b> (capacity of 10) |
| 2 | <b>THE SALOON</b> (capacity of 32-120)        | 6 | <b>THE ROSE ROOM</b> (capacity of 14) |
| 3 | <b>THE DRAWING ROOM</b> (capacity of 20-80)   | 7 | <b>SOUTH-WEST TERRACE</b>             |
| 4 | <b>THE RWB ROOM</b> (capacity of 16-50)       | 8 | <b>SOUTH-EAST TERRACE</b>             |



For enquiries please contact: [events@thened.com](mailto:events@thened.com)